



OSWORLD[®]
Experiment With The Truth

Osworld Scientific Equipments Pvt. Ltd.

Corp. Office:

**B-44 New Empire Industrial Premises
Ramkrishna Mandir Road, Kondivita
Andheri (E) Mumbai—400 059**

Tel: +91-22-28320880

+91-22-28390487

+91-22-66916595

Email: info@osworldindia.com

Factory:

**8, Olympus Industrial Estate
Layout Road
Off Mahakali Caves Road
Andheri (E), Mumbai 400 093**

Factory:

R-15 / R-16

Osworld House

Shubham Industrial Park

Bhiwandi Vasai Road

Village Kalwar

Taluka Bhiwandi

Dist: Thane



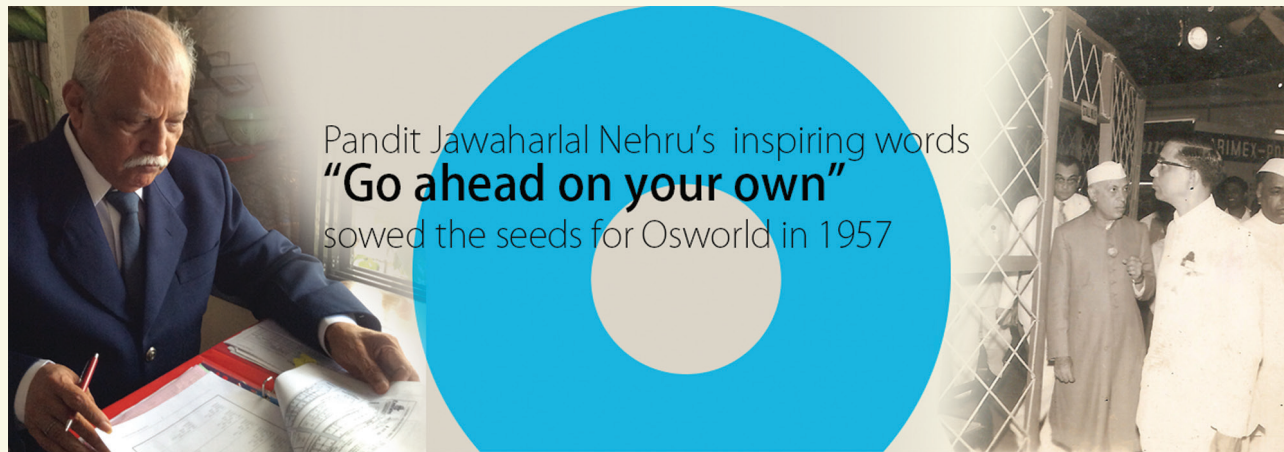
www.osworldindia.com

We are a company that's
trustworthy and truthful
Our products don't lie

At Osworld, our tagline, "Experiment with the Truth," reflects our commitment to precision and integrity.

Our mission is to create a reliable environment where genuine, uncompromised testing is not just a goal but a guarantee. Through rigorous calibration and validation, we ensure the highest level of accuracy in our equipment.

Our Products Don't Lie.



Joseph D'Souza
Founder

Joseph D'Souza learnt early in life that what he earns he must also give back to society. And it is this thought that got him to work with High Court Advocate R S Honawar to improve housing facilities for people in Mahim, Mumbai. "Nothing makes me happier than seeing my employees move on to bigger things. I tell them to work hard because I believe everyone has the ability to reach out and touch the skies," says Joseph D'Souza (92).



Osbert D'Souza
Director

"I have always admired European and American manufacturers for quality. This prompted me to tie up with international critical component manufacturers. I firmly believe different manufacturers specialize in different products; we need to use their resources, capability, infrastructure, R&D and integrate these parts with our products. As part of this initiative, we tied up with a Swiss company for sensors, a German company for electronics and hardware, and an Italian manufacturer for the HMI."



Oswin D'Souza
Director

"Every business is competitive. It is competition that keeps us on our toes else we might get complacent. It is competition that is making me envisage Osworld as an organization that should INVENT rather than INNOVATE. We need to believe in R&D and earmark at least 5 per cent of the turnover for R&D to be able to explore high-value products. I have great belief in the potential of Indian manufacturing visà-vis technological brilliance (hardware/software) provided we are able to channelize it properly."

In 1957, at a scientific equipment exhibition, a young Joseph D'Souza, the founder of Osworld Scientific Equipments Pvt. Ltd., received words of encouragement from India's first Prime Minister, Jawaharlal Nehru. "Go ahead in this line. Keep moving on your own," Nehru told him. This ignited a spark within D'Souza, inspiring him to embark on his entrepreneurial journey. Starting as a supplier and trader, D'Souza's determination propelled Osworld Scientific Equipments Pvt. Ltd. to become a prominent force in the industry.

Today, Osworld, has forged strategic partnerships with global giants in technology and electronic hardware. Collaborating with renowned brands like Siemens (Germany), Exor (Italy), Rotronic (Switzerland), and Rahrbach (Germany). Osworld leverages cutting-

edge components to produce laboratory equipment of exceptional quality. These partnerships ensure that our products meet the highest industry standards and consistently deliver reliable performance.

Highlights

- Manufacturing high-quality equipment for 52 years.
- Our equipment is installed in 30-plus countries
- With 10,000-plus units sold, our products have become a trusted choice for customers worldwide.
- Bureau Veritas ISO Certified
- Our products conform to ICH guidelines and comply with USFDA, WHO, GLP, and GMP norms.
- Osworld offers prompt, and reliable after-sales support.

P r o d u c t s

Deep
Freezer



Pharma
Refrigerator

Cooling
Incubator



BOD
Incubator

Walk-in
Stability Chamber



Walk-in
Cooling Incubator

Stability
Chamber



Bacteriological
Incubator



Premium
Autoclave



Hot Air Oven



Wing Nut
Autoclave



Key Specifications

Temperature Range: 20.0°C to 60.0°C
 Temperature Accuracy: ± 0.2°C
 Temperature Uniformity: ± 1°C
 Humidity Range: 20% to 90% RH
 Humidity Accuracy: ± 2% RH
 Humidity Uniformity: ± 3% RH

Product Highlights

Touchscreen Coloured HMI: Exor, Italy
 Program Logic Control (PLC): Siemens, Germany
 Temp and Humidity Sensor: Rotronic, Switzerland
 Door Handle: Rahrbach, Germany
 Stainless Steel: Jindal, India

Salient Features

- 21 CFR Part 11 Compliant Web-based Software
- LAN Connectivity & Ethernet Communication
- Attractive HMI Sporting a 7" Colour Display
- SMS Alert, MKT, Audit Trail, Alarm Log
- Door Access Control (Biometric)
- Fail-safe Backup Systems
- IQ,OQ, PQ Protocols as Per Regulatory Standards

Ordering Information

Internal Size	External Size	Capacity Liters	SS Shelf	GMP Model No.	Power	
W x D x H cm	W x D x H cm				VAC, Hz	Amps
45 x 45 x 60	61 x 106 x 127	120	2	OSC G 4	230,50	8
60 x 60 x 60	76 x 121 x 127	200	2	OSC G 8	230,50	10
60 x 60 x 90	76 x 121 x 157	324	3	OSC G 12	230,50	10
60 x 60 x 125	76 x 121 x 192	450	4	OSC G 16	230,50	14
60 x 80 x 125	76 x 141 x 192	600	5	OSC G 21	230,50	16
80 x 80 x 125	96 x 141 x 192	800	5	OSC G 28	230,50	20
80 x 100 x 125	96 x 161 x 192	1000	5	OSC G 34	230,50	20



Key Specifications

For conditions as per ICH guidelines
 Temperature Range: 20.0°C to 60.0°C
 Temperature Accuracy: ± 0.2°C
 Temperature Uniformity: ± 1°C
 Humidity Range: 20% to 90% RH
 Humidity Accuracy: ± 2% RH
 Humidity Uniformity: ± 3% RH

Product Highlights

Touchscreen Coloured HMI: Exor, Italy
 Program Logic Control (PLC): Siemens, Germany
 Temp and Humidity Sensor: Rotronic, Switzerland
 Door Handle: Rahrbach, Germany
 Stainless Steel: Jindal, India

Salient Features

- 21 CFR Part 11 Compliant Web-based Software
- LAN Connectivity & Ethernet Communication
- Attractive HMI Sporting a 7" Colour Display
- SMS Alert, MKT, Audit Trail, Alarm Log
- Door Access Control (Biometric)
- Fail-safe Backup Systems
- IQ,OQ, PQ Protocols as Per Regulatory Standards

Ordering Information

Internal Size	External Size	Capacity Liters	No. of racks	No. of Shelves	Shelf Size Mm (WXD)	Power	
W x D x H cm	W x D x H cm					VAC, Hz	Amps
2000 x 1250 x 2000	2160 x 1410 x 2160	5000	2	8	1130 x 625	230,50	12
2000 x 2000 x 2000	2160 x 2160 x 2160	8000	4	16	905 x 550	230,50	12
2000 x 2500 x 2000	2160 x 2660 x 2160	10000	6	24	780 x 500	440,50	16
2500 x 2500 x 2000	2660 x 2660 x 2160	12500	6	24	760 x 775	440,50	16
2550 x 2950 x 2000	2710 x 3110 x 2160	15000	6	24	900 x 825	440,50	16
2800 x 3580 x 2000	2960 x 3740 x 2160	20000	8	32	840 x 900	440,50	20

Note: Larger capacities available based on requirement



Key Specifications

Temperature Range: 10.0°C to 60.0°C

Temperature Accuracy: ± 0.2°C

Temperature Uniformity: ± 1.0°C

Product Highlights

Touchscreen Coloured HMI: Exor, Italy

Program Logic Control (PLC): Siemens, Germany

Temperature Sensor PT100 RTD

Door Handle: Rahrbach, Germany

Stainless Steel: Jindal, India

Salient Features

- 21 CFR Part 11 Compliant Web-based Software
- LAN Connectivity & Ethernet Communication
- Attractive HMI Sporting a 7" Colour Display
- SMS Alert, MKT, Audit Trail, Alarm Log
- Door Access Control (Biometric)
- Fail-safe Backup Systems
- IQ,OQ, PQ Protocols as Per Regulatory Standards

Ordering Information

Internal Size W x D x H cm	External Size W x D x H cm	Capacity Liters	SS Shelf	GMP Model. Regular / Advanced	Power	
					VAC, Hz	Amps
45 x 45 x 60	61 x 89 x 127	120	2	OBOD G 4	230,50	6
60 x 60 x 60	76 x 104 x 127	215	2	OBOD G 8	230,50	8
60 x 60 x 90	76 x 104 x 157	324	3	OBOD G 12	230,50	8
60 x 60 x 125	76 x 104 x 192	450	4	OBOD G 16	230,50	10
60 x 80 x 125	76 x 124 x 192	600	5	OBOD G 21	230,50	10
80 x 80 x 125	96 x 124 x 192	800	5	OBOD G 28	230,50	12
80 x 100 x 125	96 x 144 x 192	1000	5	OBOD G 34	230,50	12



Key Specifications

Temperature Range: +2.0°C to +8.0°C

Temperature Accuracy: ± 0.2°C

Temperature Uniformity: ± 2.0°C

Product Highlights

Touchscreen Coloured HMI: Exor, Italy

Program Logic Control (PLC): Siemens, Germany

Temperature Sensor PT100 RTD

Door Handle: Rahrbach, Germany

Stainless Steel: Jindal, India

Salient Features

- 21 CFR Part 11 Compliant Web-based Software
- LAN Connectivity & Ethernet Communication
- Attractive HMI Sporting a 7" Colour Display
- SMS Alert, MKT, Audit Trail, Alarm Log
- Door Access Control (Biometric)
- Fail-safe Backup Systems
- IQ,OQ, PQ Protocols as Per Regulatory Standards

Ordering Information

Internal Size W x D x H cm	External Size W x D x H cm	Capacity Liters	SS Shelf	GMP Model. Regular / Advanced	Power	
					VAC, Hz	Amps
45 x 45 x 60	61 x 89 x 127	120	2	OCI/OPR G 4	230,50	6
60 x 60 x 60	76 x 104 x 127	215	2	OCI/OPR G 8	230,50	8
60 x 60 x 90	76 x 104 x 157	324	3	OCI/OPR G 12	230,50	8
60 x 60 x 125	76 x 104 x 192	450	4	OCI/OPR G 16	230,50	10
60 x 80 x 125	76 x 124 x 192	600	5	OCI/OPR G 21	230,50	10
80 x 80 x 125	96 x 124 x 192	800	5	OCI/OPR G 28	230,50	12
80 x 100 x 125	96 x 144 x 192	1000	5	OCI/OPR G 34	230,50	12



Autoclave Steam Sterilizer (Wing Nut Model)



Key Specifications

Temperature Range: Ambient to 125°C
Temperature Accuracy: $\pm 0.2^{\circ}\text{C}$
Operating Pressure: 0 to 15 PSI
Pressure Display: Dial gauge
Pressure Resolution: 1 PSI

Product Highlights

Temperature Sensor: PT100 RTD
Temperature Control: Microprocessor
Temperature Display: LCD backlit display

Salient Features

- Fully Automatic Cycle
- Automatic Air Purging
- Low Water Level Safeguard
- Sterilization Time Control
- Automatic Steam Exhaust
- Cycle Print Record

Ordering Information

Size of Inner Chamber		External Size	Capacity	Rating	Power	
In inches Dia x Ht	In cm Dia x Ht	Inches W x D x H	Liters	KW	VAC, Hz	Amps
12 x 20	30 x 50	23 x 20 x 39	35	2.0	230,50	8
14 x 22	35 x 55	25 x 21 x 45	52	3.0	230,50	12
18 x 24	45 x 60	29 x 30 x 48	95	4.0	230,50	16
18 x 30	45 x 75	29 x 30 x 52	125	4.0	230,50	16
22 x 30	55 x 75	32 x 34 x 52	175	6.0	230,50	24



Autoclave Steam Sterilizer (Premium Model-Single Lever)



Experiment With The Truth



Key Specifications

Temperature Range: Ambient to 125°C
Temperature Accuracy: $\pm 0.2^{\circ}\text{C}$
Operating Pressure: 0 to 15 PSI
Pressure Display: Dial gauge
Pressure Resolution: 1 PSI

Product Highlights

Stainless Steel: Jindal, India
7" Touch screen coloured HMI: Exor, Italy
Program Logic Control (PLC): Siemens, Germany
Temperature Sensor: PT100 RTD
Door Type: Top opening single door.

Salient Features

- Fully Automatic Password Protected Cycle
- Air Purging With Auto Steam Exhaust
- Radial Locking Lid Mechanism
- Under-pressure Lid Safeguard
- FO Calculation, Audit Trail, Alarm Report
- LAN Connectivity via Ethernet
- Batch-wise Cycle Recording
- 21 CFR Part 11 Data Management Software

Ordering Information

Size of Inner Chamber		External Size	Capacity	Rating	Model no.	Power	
in inches Dia x Ht	in cms Dia x Ht	In inches	Liters	KW		VAC, Hz	Amps
18 x 24	45 x 60	29 x 24 x 45	95	4	OAT SHI G 95	230, 50	16
18 x 30	45 x 80	29 x 24 x 49	125	4	OAT SHI G 125	230, 50	16
18 x 37	45 x 95	33 x 28 x 49	150	4	OAT SHI G 150	230, 50	16



Bacteriological Incubator



Key Specifications

Temperature Range: Ambient +5°C to 60.0°C.

Temperature Accuracy: $\pm 0.2^{\circ}\text{C}$

Temperature Uniformity: $\pm 1.0^{\circ}\text{C}$

Product Highlights

- Touchscreen Coloured HMI: Exor, Italy
- Program Logic Control (PLC): Siemens, Germany
- Temperature Sensor: PT100 RTD
- Door Handle: Rahrbach, Germany
- Stainless Steel: Jindal, India

Salient Features

- 21 CFR Part 11 Compliant Web-based Software
- LAN Connectivity & Ethernet Communication
- Attractive HMI Sporting a 7" Colour Display
- SMS Alert, MKT, Audit Trail, Alarm Log
- Door Access Control (Biometric)
- Fail-safe Backup Systems
- IQ,OQ, PQ Protocols as Per Regulatory Standards



Deep Freezer



Experiment With The Truth



Key Specifications

Temperature Range: -20°C, -30°C, -40°C.

Temperature Accuracy: $\pm 3^{\circ}\text{C}$

Temperature Uniformity: $\pm 5^{\circ}\text{C}$

Product Highlights

- Touchscreen Coloured HMI: Exor, Italy
- Program Logic Control (PLC): Siemens, Germany
- Temperature Sensor: PT100 RTD
- Door Handle: Rahrbach, Germany
- Stainless Steel: Jindal, India

Salient Features

- 21 CFR Part 11 Compliant Web-based Software
- LAN Connectivity & Ethernet Communication
- Attractive HMI Sporting a 7" Colour Display
- SMS Alert, MKT, Audit Trail, Alarm Log
- Door Access Control (Biometric)
- Fail-safe Backup Systems
- IQ,OQ, PQ Protocols as Per Regulatory Standards

Ordering Information

Internal Size	External Size	Capacity	Power	Shelve	Power	
W x D x H cm	W x D x H cm	Liters	(Watts)	(S.S)	VAC, Hz	Amps
35 x 35 x 35	55 x 60 x 85	42	1500	2	230,50	1
45 x 45 x 45	65 x 70 x 95	90	2000	2	230,50	1
45 x 45 x 60	70 x 70 x 105	120	2000	3	230,50	2
60 x 60 x 60	90 x 85 x 110	215	2500	3	230,50	2
60 x 60 x 90	90 x 85 x 135	320	3000	3	230,50	2
60 x 60 x 125	90 x 85 x 170	450	3500	4	230,50	3
60 x 80 x 125	78 x 122 x 172	600	3500	5	230,50	3
80 x 80 x 125	110 x 105 x 172	800	3500	5	230,50	3
80 x 100 x 125	110 x 125 x 172	1000	3500	5	230,50	3

Ordering Information

Internal Size	External Size	Capacity	SS Shelf	GMP Model.	Power	
W x D x H cm	W x D x H cm	Liters		Regular / Advanced	VAC, Hz	Amps
45 x 45 x 60	61 x 74 x 127	120	2	ODF-20 G 4	230,50	10
60 x 60 x 60	76 x 89 x 127	200	2	ODF-20 G 8	230,50	10
60 x 60 x 90	76 x 89 x 157	324	3	ODF-20 G 12	230,50	12
60 x 60 x 125	76 x 89 x 192	450	4	ODF-20 G 16	230,50	12
60 x 80 x 125	76 x 109 x 192	600	5	ODF-20 G 21	230,50	12
80 x 80 x 125	96 x 109 x 192	800	5	ODF-20 G 28	230,50	15
80 x 100 x 125	96 x 129 x 192	1000	5	ODF-20 G 34	230,50	15

Hot Air Oven



Key Specifications

Temperature Range: Ambient +5°C to 250°C

Temperature Accuracy: $\pm 0.5^{\circ}\text{C}$

Temperature Uniformity:

$\pm 1^{\circ}\text{C}$ at 100°C

$\pm 1.5^{\circ}\text{C}$ at 150°C

$\pm 2^{\circ}\text{C}$ at 200°C

Product Highlights

Temperature Control: PID / HMI – PLC

Temperature Sensor: PT100 RTD

Rockwool Insulation

Salient Features

- Double Wall Construction
- Heating Tubular in SS Sheathing
- Motorised Air Circulation
- 21 CFR Part 11 Compliant Software
- Trays: SS Wire Meshes Heavy-duty
- RS485 Communication

Ordering Information

Internal Size	External Size	Capacity Liters	Power Watts	No. of shelves	GMP Model No.	Power	
W x D x H cm	W x D x H cm					VAC, Hz	Amps
35 x 35 x 35	55 x 60 x 85	42	1500	2	00G G 42	230,50	4
45 x 45 x 45	65 x 70 x 95	90	2000	2	00G G 90	230,50	4
45 x 45 x 60	70 x 70 x 105	120	2000	3	00G G 120	230,50	4
60 x 60 x 60	90 x 85 x 110	215	2500	3	00G G 215	230,50	8
60 x 60 x 90	90 x 85 x 135	324	3000	3	00G G 320	230,50	8
60 x 60 x 125	90 x 85 x 170	450	3000	4	00G G 450	230,50	8
60 x 80 x 125	78 x 122 x 172	600	3000	5	00G G 600	230,50	8
80 x 80 x 125	110 x 105 x 172	800	3000	5	00G G 800	230,50	12
80 x 100 x 125	110 x 125 x 172	1000	3000	5	00G G 1000	230,50	12

Complete Product List

- Autoclave
- Steam Sterilizer
- Walk-In Stability Chamber
- Walk-In Environmental Chamber
- Walk In Humidity Chamber
- Walk-In Cold Room
- Walk-In Refrigerated Incubator
- Walk In Cooling Chamber/Cabinet
- Stability Chamber
- Environmental Test Chamber
- Humidity Chamber
- Constant Climate Chamber
- BOD Incubator
- Refrigerated Incubator
- Biomedical Refrigerator
- Pharma Refrigerator
- Cooling Incubator
- Cooling Chamber
- Bacteriological Incubator
- Hot Air Oven
- Deep Freezer
- Low Temperature Freezer
- Photo Stability Chamber
- Vacuum Oven Round / Rectangular
- Seed Germinator
- Drying and Heating Chamber

TESTIMONIALS

Company: Avis Ilac Sanayi | **Country:** Turkey

Since we installed two units of Walk-in Stability Chambers from Osworld Scientific Equipments Pvt. Ltd., they have been functioning as assured. In my opinion, Osworld products have met our expectations. We would like to thank Osworld for providing us with quality products backed with a good service team.

Company: Kimsy Meds Ltd. | **Country:** Uganda

We have been using Osworld Stability Chambers and are extremely pleased with their reliable performance. The service support provided by Osworld has consistently met our expectations. We highly recommend Osworld for their excellent equipments and outstanding customer service.

In a world where data integrity and regulatory compliance are critical, Osworld's 21 CFR Part 11 compliant software stands out as the go-to solution for data logging. With global acceptance and a track record of exceeding industry standards, Osworld ensures not only compliance but also the optimization of your operations. Choose Osworld software to ensure that your operations are not just compliant, but also optimized for success. Experience the peace of mind that comes with knowing your data is secure, your processes are streamlined, and your business is ready to meet the challenges of today and tomorrow.

Osworld's Web-Based Monitoring and Logging Software (OSLOG/WEB/16.1) is a validated, licensed application designed to seamlessly integrate with our equipment, enabling real-time logging of temperature and humidity. Hosted on a centralized server, it gathers data from multiple devices and allows users to monitor equipment from any operating system connected to the same Wi-Fi network. This powerful tool supports multiple departments within a facility, providing comprehensive monitoring and precise data logging through a single platform. In multi-department mode, admins can assign restricted, department-specific access rights, enhancing data security.

Why Choose Osworld Software?

- **Regulatory Compliance:** Osworld software meets all the stringent requirements of 21 CFR Part 11, providing you with peace of mind that your data is managed in full compliance with global regulations.
- **Global Acceptance:** Trusted by leading companies worldwide, Osworld software is recognized for its reliability, user-friendly interface, and comprehensive feature set. Whether you're operating in the pharmaceutical, biotech, or food industries, our solution is universally accepted and utilized across the globe.
- **Robust Data Security:** With advanced encryption, regular data backups, and a comprehensive audit trail, your data is protected against unauthorized access and tampering, ensuring its integrity and availability at all times.
- **User-Centric Design:** Osworld software is designed with the user in mind, offering an intuitive interface and customizable reports that allow you to manage your data efficiently and effectively.



Software Capabilities

User-Centric Design

Regulatory Compliance

Robust Data Security

Global Acceptance

Achieve full regulatory compliance with these essential features

User Authentication

- Unique User IDs
- Password Protection
- Role-Based Access Control (RBAC)

Audit Trail

- Automated, Time-Stamped Logs
- Event Tracking (Who, What, When)
- Readable and Accessible Logs

Electronic Signatures

- Binding and Tamper-Proof
- Dual Authentication (Username and Password)
- Signature Manifestation (Name, Date, Purpose)

Data Integrity and Security

- Data Encryption
- Regular Data Backups
- Access Logs

Data Recording and Storage

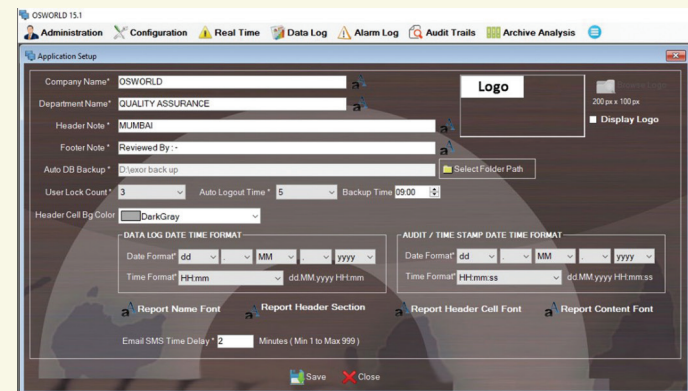
- Real-Time Data Acquisition
- Data Redundancy
- Long-Term Secure Storage

Report Generation

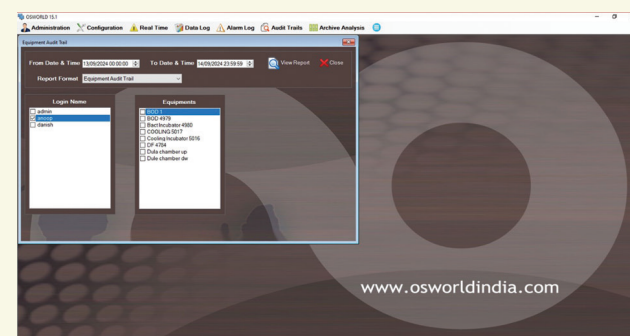
- Automated and Customizable Reports
- Multiple Export Formats (PDF, CSV)

Data Retention and Archiving

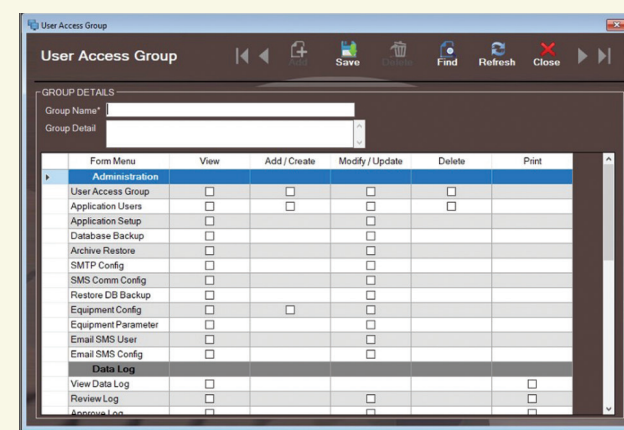
- Defined Retention Period
- Automatic Archiving



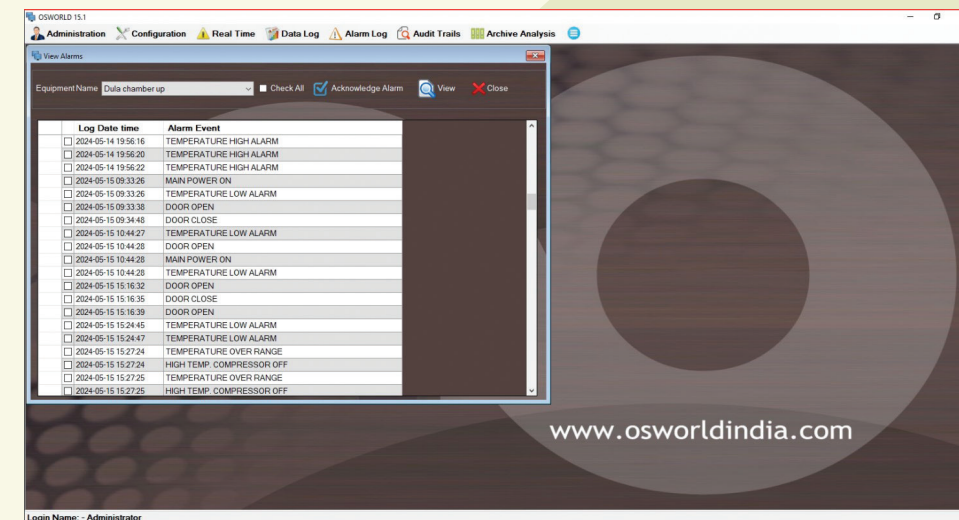
Application Setup



Equipment Audit Trail



User Access Groups

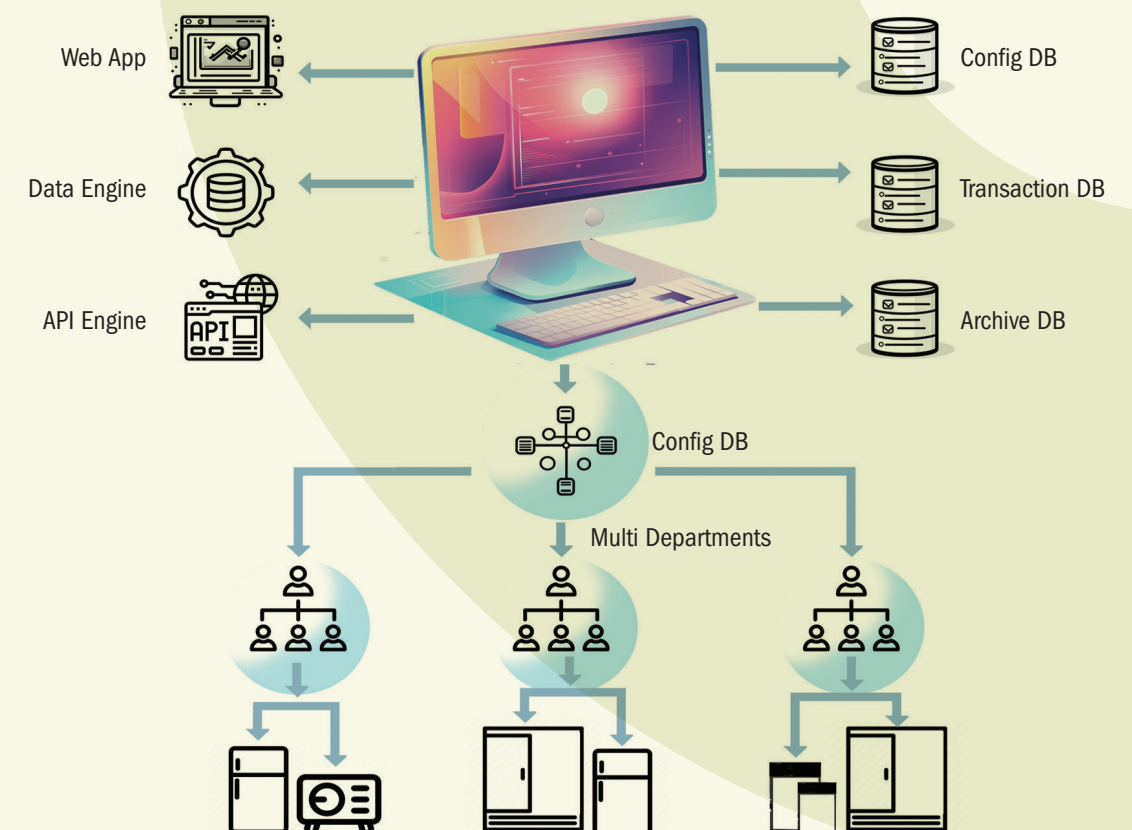


View Alarms

Notification and Alerts

- Real-Time Alerts for Deviations
- Customizable Alert Settings

Client-Server Architecture | Browser-Based | Cloud Ready | Base Ready Solution



Calibration

At Osworld, we ensure precise environmental control for our stability chambers through rigorous calibration. We adhere to GXP and ISO/IEC 17025 standards, aligning with IEC guidelines to maintain exceptional accuracy.



Validation

Validation of Osworld equipment involves three key processes: **Installation Qualification (IQ)**, **Operational Qualification (OQ)**, and **Performance Qualification (PQ)**. These steps confirm stable conditions and ensure the chamber meets its specifications and quality attributes, providing evidence of its reliability and precision for consistent environmental control.



After Sales Service

Osworld's after-sales service is fast, dependable, and built for long-term support, empowering manufacturers to conduct authentic tests while minimizing costs. With components available for up to 10-plus years, we ensure seamless maintenance. Our expertise extends globally, with successful installations in countries from Spain to South Africa—all achieved remotely through video platforms.

To further simplify the process, our specially-crafted online video tutorials provide step-by-step guidance, making installation and maintenance effortless. At Osworld, we deliver world-class service.

TESTIMONIALS

Company: Pharma Neuva | **Country:** Thailand

Since we installed two units of Walk-In Stability Chambers and one Photo Stability Chamber, they have been in excellent operating condition. In my opinion, Osworld products have met our expectations. On behalf of our distributor in Thailand, BB Tech, we appreciate the outstanding quality of service provided. We hope that you and your distributor will continue to maintain this level of service and recognize us as a key customer account. I would like to thank Osworld for providing us with a great experience in terms of both, high product performance and an excellent service team.



30 % of our business is due to repeat orders from existing clients.
We have created **a network of satisfied customers across the globe**



customer service and loyalty
has created a network of
satisfied customers
across the globe

TESTIMONIAL

Company Name: Pharmactive Biotech Products | **Country:** Spain

We purchased two Stability Chambers, model OSC G-16, one year ago. They have been in operation since then, consistently meeting our expectations and needs. We especially appreciate the responsiveness and effectiveness of the Osworld Scientific Equipments team, as well as their availability to assist with any requests. We would recommend the company without a doubt.

The background is a grayscale abstract composition. A bright, diffused light source is positioned in the upper left, creating a gradient that fades into the dark background. In the lower right, there are dynamic, flowing shapes that resemble liquid or smoke, with sharp highlights and deep shadows that suggest movement and depth. The overall mood is futuristic and sleek.

OSWORLD